



## Waterloo Sierra

1,844 Sq. Ft.

3 Bedrooms / 2 Baths

Complete Package...\$140,957.00\*

\*See Green Price Book for Materials List for Packages Above.

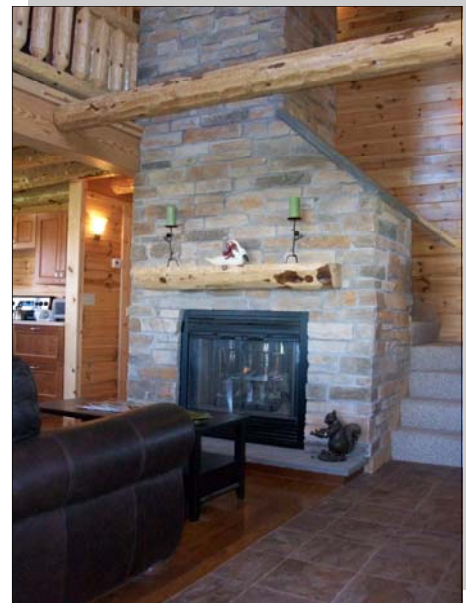


The Waterloo Sierra is a classic log home design both inside and out. A spacious loft overlooks the great room below. Two downstairs bedrooms and Master Suite up will give you room for a growing family or visiting friends. On the exterior an open deck and a full 8' x 44' front porch make entertaining easy in any weather.

This model is a corporate office located in Waterloo, NY on Rt. 318 (adjacent to the Waterloo Factory Outlet Mall) and is easily accessed from the NY State Thruway (Rt. 90 between Syracuse and Rochester.)



Sign on Rt. 90



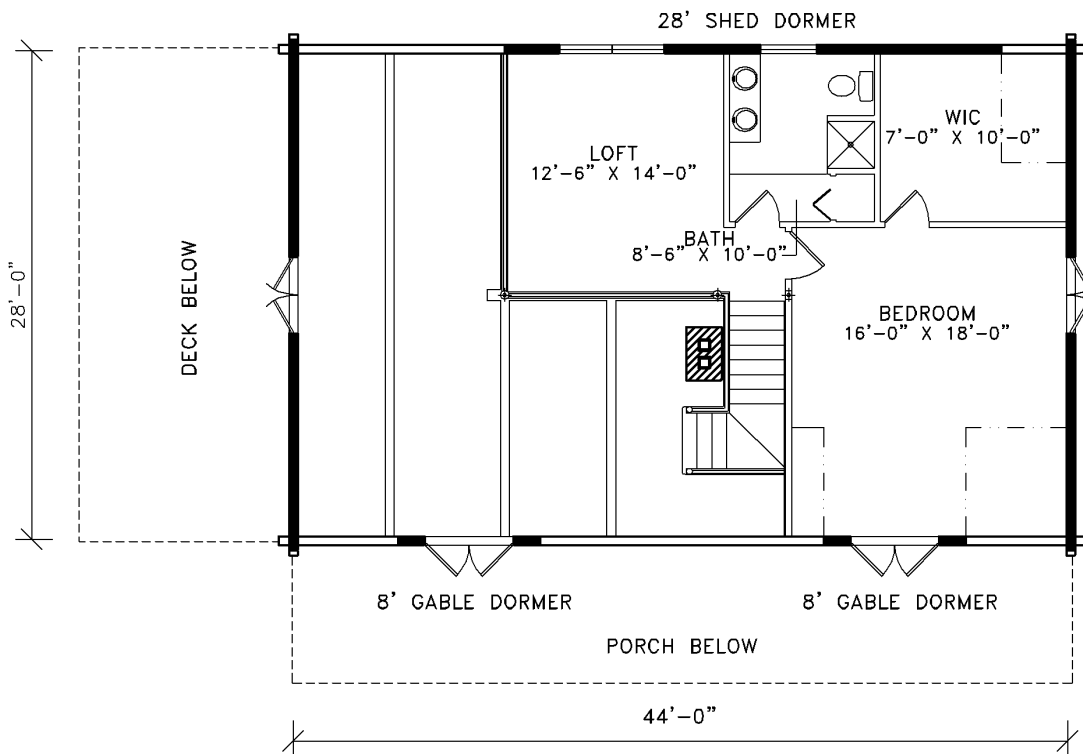
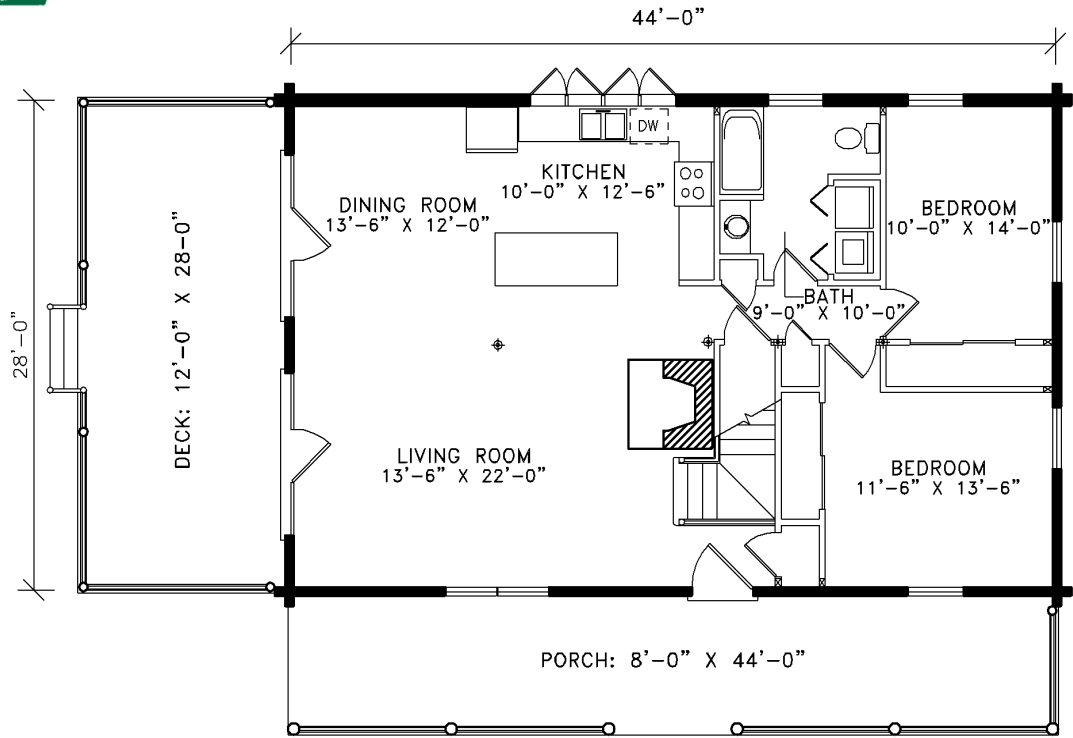
Lok-N-Logs Log Homes  
PO Box 677  
Sherburne, NY 13460  
(800) 343-8928  
[www.loknlogs.com](http://www.loknlogs.com)



### The Waterloo Sierra

1,844 Sq. Ft.

3 Bedrooms / 2 Baths



Lok-N-Logs, Inc.  
Waterloo Model  
667 State Route 318  
Waterloo, NY 13165  
(888) 822-6822  
waterlooinfo@loknlogs.com  
www.loknlogs.com